

M12 PushPull 4-pole D-coded female

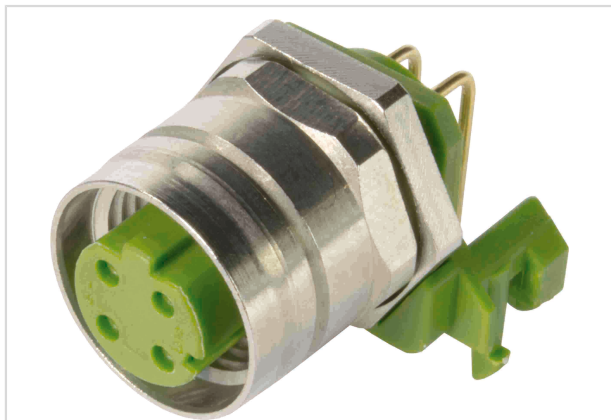


Image is for illustration purposes only. Please refer to product description.

Part number	21 03 881 2430
Specification	M12 PushPull 4-pole D-coded female
HARTING eCatalogue	https://b2b.harting.com/21038812430

Identification

Category	Connectors
Series	Circular connectors M12
Identification	PushPull
Element	Cable connector
Specification	Straight

Version

Termination method	Crimp termination
Gender	Female
Shielding	Shielded
Number of contacts	4
Coding	D-coding
Locking type	Outer PushPull
Details	Please order crimp contacts separately.
Details	For Fast Ethernet applications only

Technical characteristics

Conductor cross-section	0.14 ... 0.75 mm ²
Conductor cross-section	AWG 26 ... AWG 18
Wire outer diameter	≤2.3 mm
Rated current	4 A
Rated voltage	48 V AC 60 V DC



Pushing Performance
Since 1945

Technical characteristics

Rated impulse voltage	1.5 kV
Pollution degree	3
Transmission characteristics	Cat. 5 Class D up to 100 MHz
Overvoltage category	III
Data rate	10 Mbit/s 100 Mbit/s
Insulation resistance	$>10^8 \Omega$
Contact resistance	$\leq 10 \text{ m}\Omega$
Limiting temperature	-40 ... +85 °C
Mating cycles	≥ 500
Degree of protection acc. to IEC 60529	IP65 / IP67 mated condition
Cable diameter	5.7 ... 8.8 mm
Isolation group	I ($600 \leq \text{CTI}$)

Material properties

Material (insert)	Liquid crystal polymer (LCP)
Material (hood/housing)	Zinc die-cast
RoHS	compliant with exemption
RoHS exemptions	6(c): Copper alloy containing up to 4 % lead by weight
ELV status	compliant with exemption
China RoHS	50
REACH Annex XVII substances	Not contained
REACH ANNEX XIV substances	Not contained
REACH SVHC substances	Yes
REACH SVHC substances	Lead
ECHA SCIP number	0d7d3693-d625-47ab-934a-d241bf72c86e
California Proposition 65 substances	Yes
California Proposition 65 substances	Lead

Specifications and approvals

Specifications	IEC 61076-2-101 IEC 61076-2-010
----------------	------------------------------------

Commercial data

Packaging size	1
----------------	---



Pushing Performance
Since 1945

Commercial data

Net weight	55 g
Country of origin	Romania
European customs tariff number	85389099
GTIN	5713140226944
eCl@ss	27440116 Circular connector (for field assembly)